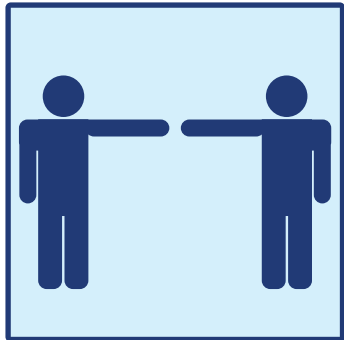




1 Welcome to Mason Health! Masks are required at all Mason Health facilities.
It is important to wear a mask properly. Masks should firmly cover your nose and mouth at all times.



7 Upon arrival, stop at the first station, you will be asked to call the registration line. Upon completion of registration, staff will review any paperwork.



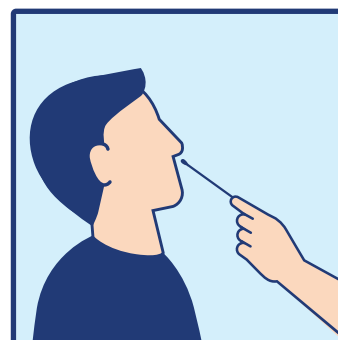
2 Social distancing of 6 feet is required in all buildings.



8 You will be directed to the second station for the Nasopharyngeal swab. Drive to the station, park your car and turn off the vehicle.



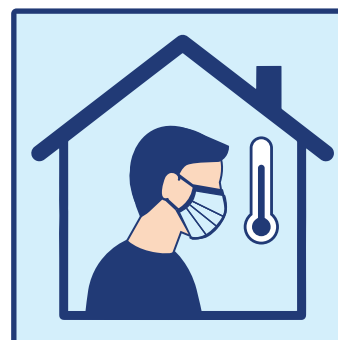
3 We require everyone to wash or sanitize their hands frequently.



9 You will be asked to tilt back your head and keep your head still while a swab will be inserted into back of the nasal-pharyngeal cavity for 3 seconds. If young children are being tested, please hold them in your lap during the test.



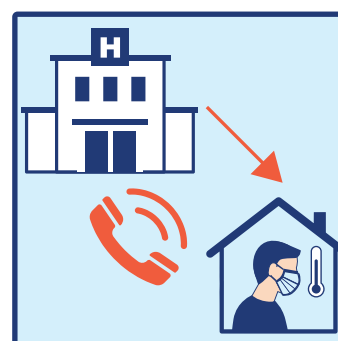
4 Symptoms of COVID-19 include: Fever or chills, Cough, Shortness of breath or difficulty breathing, Fatigue, Muscle or body aches, Headache, New loss of taste or smell, Sore throat, Congestion or runny nose, Nausea or vomiting, Diarrhea.



10 Once testing is completed, you can drive out of tent and quarantine at home until results are back. Stay home, take your temperature twice a day and monitor your symptoms.



5 If you believe you have COVID-19, please call our triage line at 360-427-3615 for an appointment. You will be given an appointment time. Please arrive at your scheduled time.



11 Results are typically back in 5 to 7 days. If you test positive, Mason County Public Health will contact you to conduct a contact tracing. A trained interviewer will reach out to the person who has tested positive and ask for the contact information of close contacts. They will not ask for a social security number or about immigration status. Participation is voluntary.



6 Drive-through testing is available. You must stay in your vehicle.

Follow us on
social media

